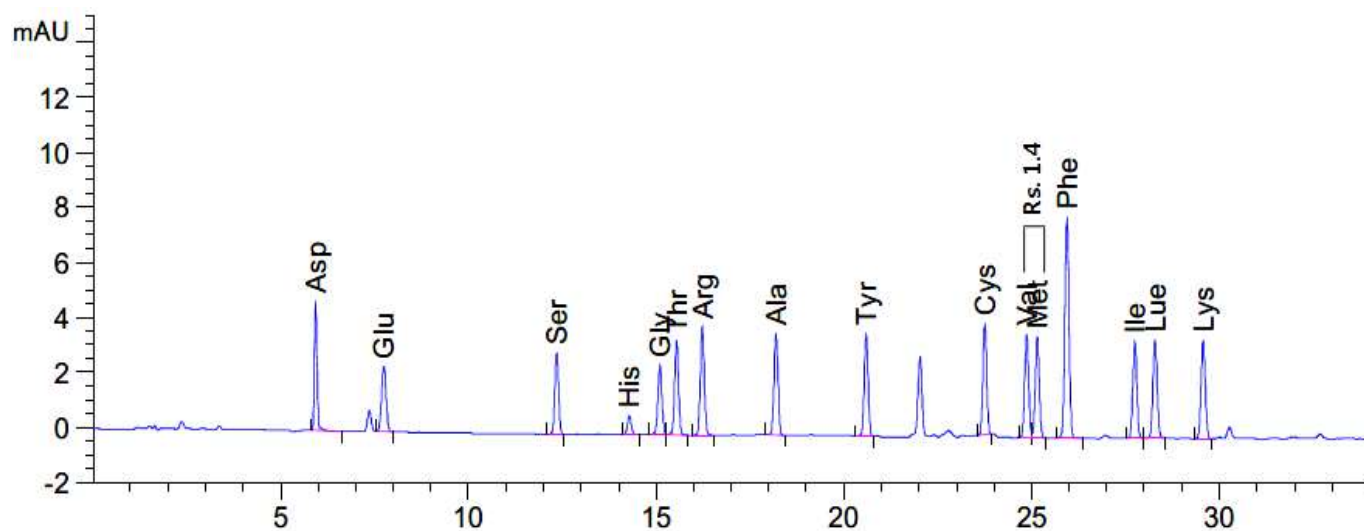


HPLC DATA SHEET

Amino acids (16 kinds)



HPLC condition

Column Aegispak C18-L (5 μ m, 4.6mm I.d. \times 250mm)

Flow rate 1.5 mL/min

Temperature 40 $^{\circ}$ C

Detector UV (338nm)

Mobile Phase (A) : 40mM Sodium phosphate(di-basic) 0.1% phosphoric acid
Mobile Phase (B) : ACN / Methanol / DW = 45 / 45 / 10
Mobile Phase (B) 0%(0min)-57%(36min)-100%(36.1min)-100%(45min)-0%(45.1min)-0%(50min)
Gradient