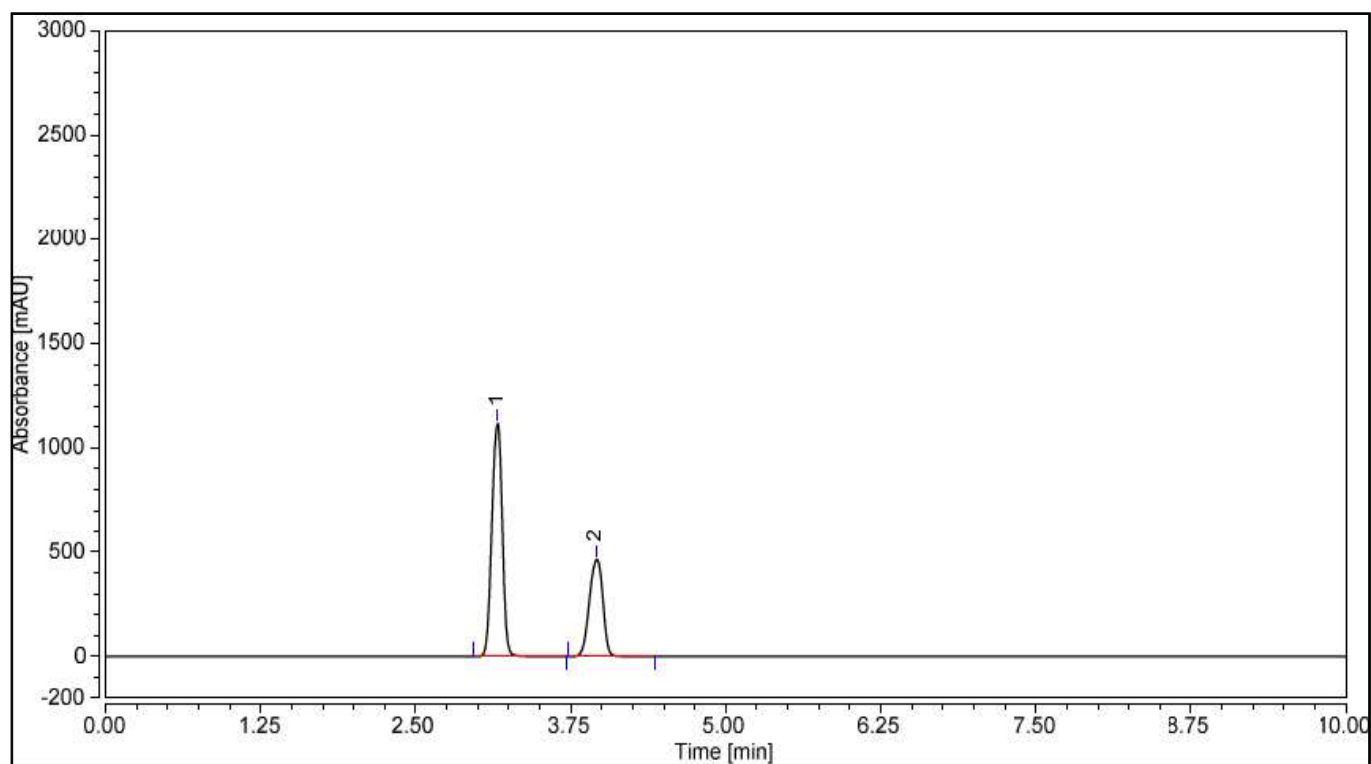


HPLC DATA SHEET

Nucleic acids (2 kinds)



1. Hypoxanthine 2. Xanthine

HPLC condition

Column INNO Column C18 (5 μ m, 4.6mm I.d. \times 150mm)
Mobile Phase water / ACN = 98 / 2 (0.1%TFA)
Flow rate 1.0 mL/min
Temperature 40 $^{\circ}$ C
Detector UV (254nm)