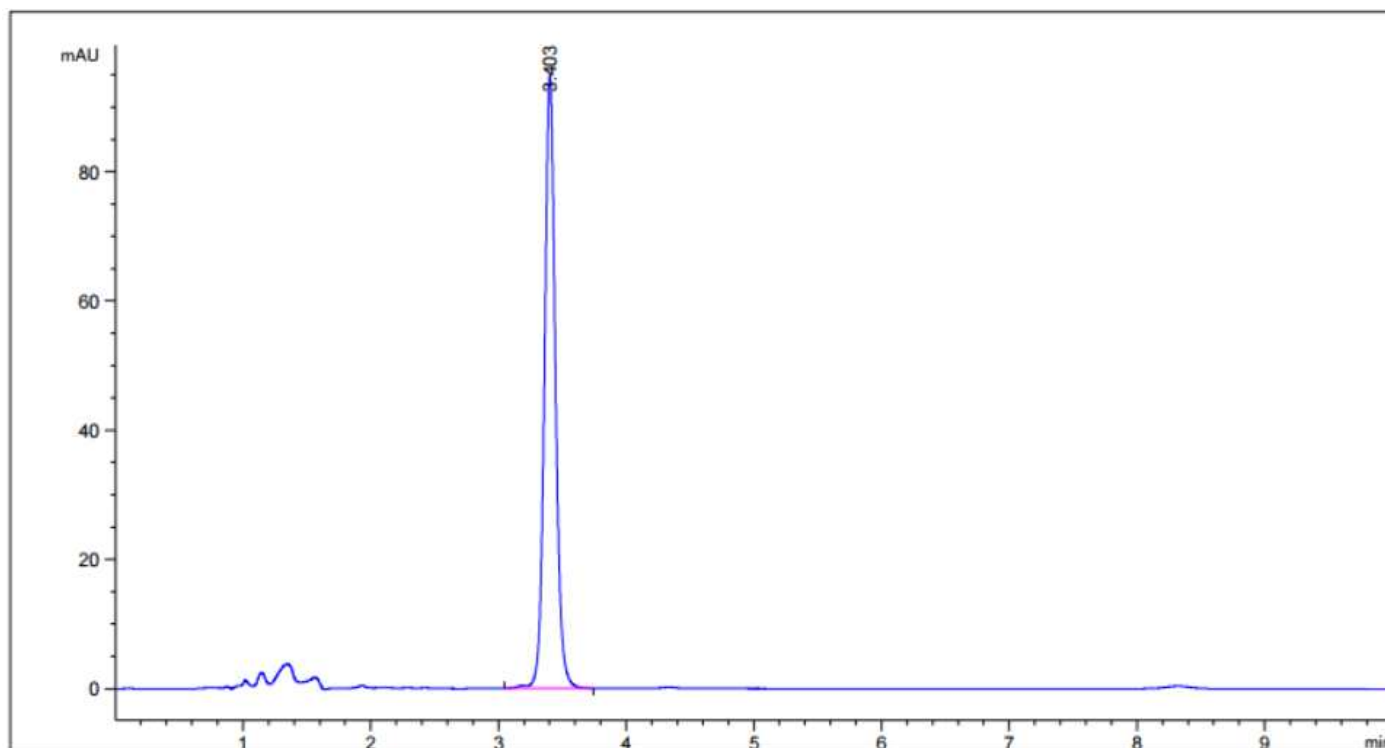


HPLC DATA SHEET

Omeprazole Capsules (USP, Dissolution)



1. Omeprazole (USP, Dissolution)

HPLC condition

Column	Aegispak C8 (5um, 4.0mm I.d. × 125mm)
Mobile Phase	Mobile phase: Dissolve 0.718g of monobasic sodium phosphate and 4.49 g of dibasic sodium phosphate in water to make 1000 mL. If necessary, adjust the pH to 7.6 with 2 mol/L Hydrochloric acid or 2 mol/L Sodium hydroxide Dilute 250mL of this solution with water to 1000mL. Add 340 volumes of acetonitrile to 660 volumes of this solution.
Flow rate	1.0mL/min
Temperature	25°C
Injection Vol.	20uL
Detector	UV (280nm)